

THREADSCAPE

COLOR BODY PORCELAIN



floridatile



Crafted for the way we live

Moss Matte 3.75x12 | **Westbridge Matte** 24x48 | **Moss Offset Basketweave Mosaic Matte** M1.5x3OBW | **Loom Matte** 12x24



THREADSCAPE

Fabric Look

COLOR BODY PORCELAIN

For thousands of years, textiles have shaped humanity's experience of the world. Textiles cover and protect us, engage our senses, trigger our memories, represent our beliefs, and hold our stories. Like a soft, hand-stitched quilt passed down from a loved one, a shirt that reminds us of our favorite concert, or grandma's cherished dress, cloth is a record of our shared memory, identity, and artistry.

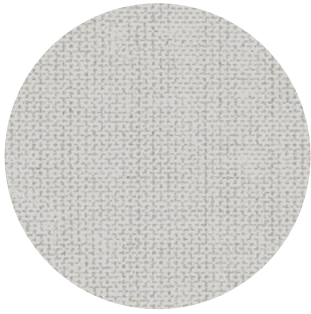
As textiles continue to evolve, the moment calls for a new abstraction. Florida Tile answers by challenging conventional ideas of surface, translating the expressive language of fabric into a new material form. Introducing Threadscape by Florida Tile: an homage to the art of textiles, reimagined through the craft of porcelain.

This collection is directly inspired by the artistry of textile and high fashion: the textured surface of a hand-stretched canvas, the familiar rhythm of a linen weave, or the structured geometry of a plaid tweed suit. The graphic features a refined, canvas-like movement, while the tactile punch adds dimension reminiscent of layered fiber or dyed textile. Modern in composition and versatile in application, the design captures the irregularities that define handmade materials. It balances softness and structure, offering a surface that feels contemporary yet deeply rooted in craft.

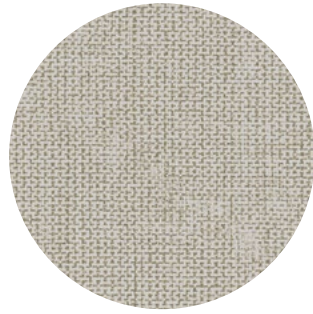


Loom Offset Basketweave Mosaic Matte M1.5x30BW

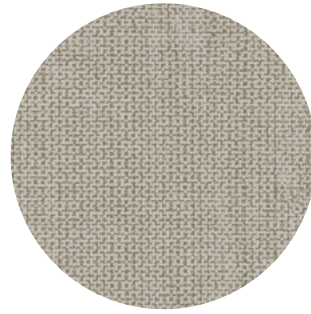
Colors



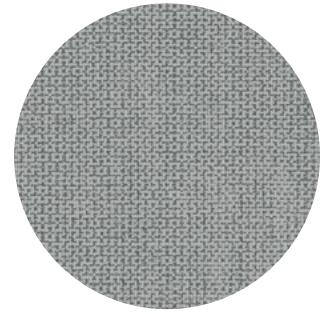
Loom
Matte



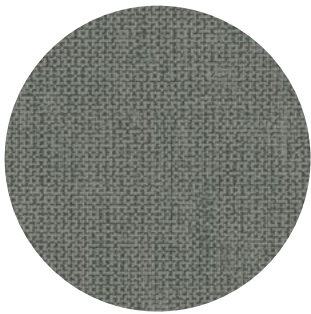
Sand
Matte



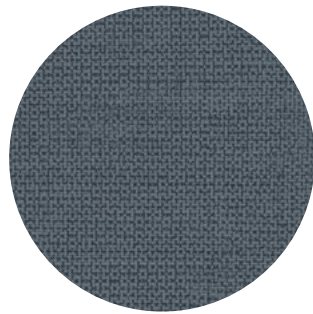
Drift
Matte



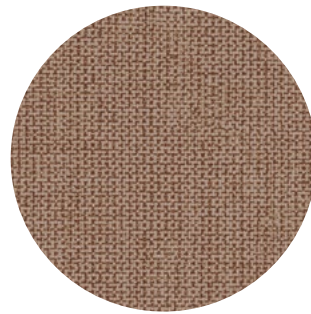
Twill
Matte



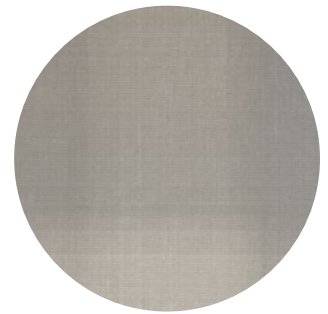
Moss
Matte



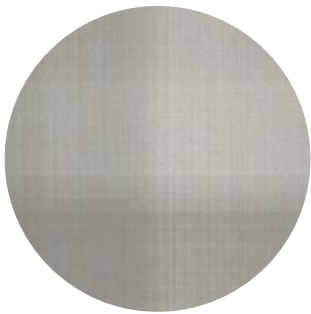
Denim
Matte



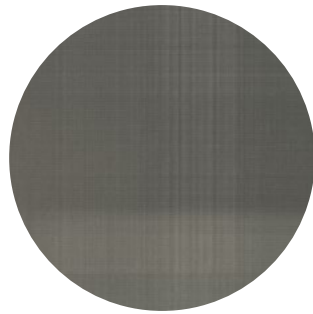
Suede
Matte



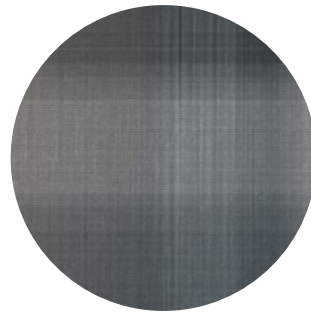
Ashford*
Matte



Harrington*
Matte



Westbridge*
Matte



Crosby*
Matte



Bexley*
Matte

*Only available in 24x48

Field Tile Formats

- 3.75x12
- 12x24
- 24x48

Mosaics

- Offset Basketweave
- Semi-Oval

Finishes

- Matte



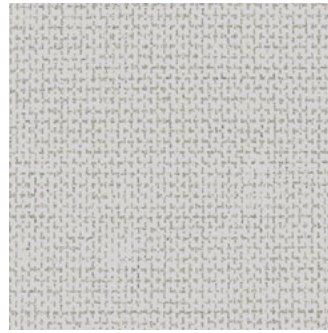
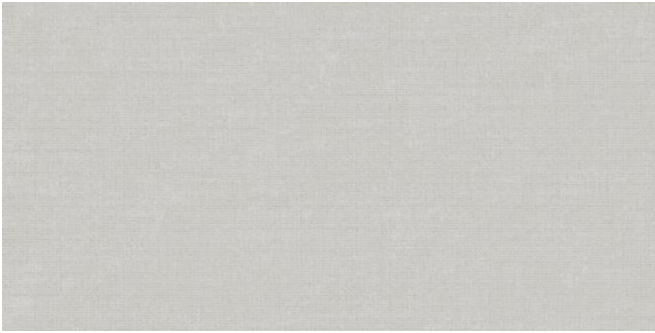
Loom

A soft, barely-there neutral with the lightness of an open weave.

Loom Matte 12x24 & 24x48 | Loom Offset Basketweave Mosaic Matte M1.5x30BW

Threadscape Loom

Close-up



THR10 Matte

Field Tile Formats



3.75x12

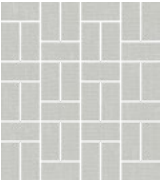


12x24

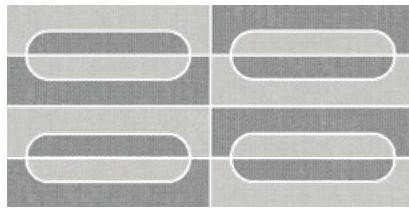


24x48

Mosaics

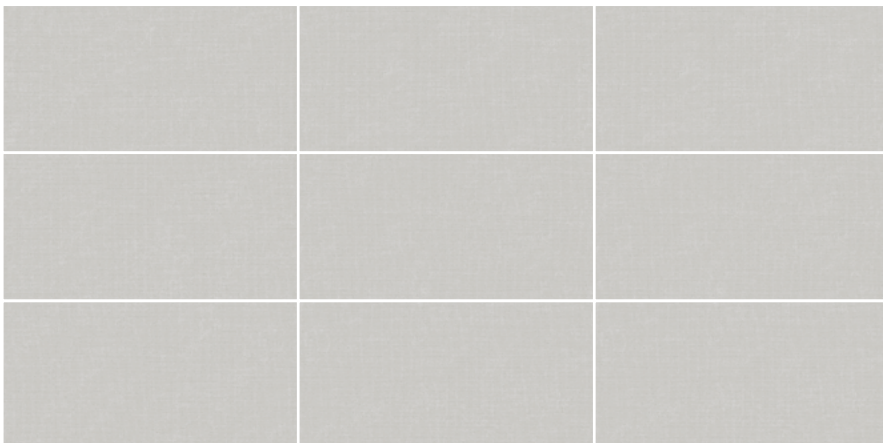


THR10/M1.5x3OBW Matte
Loom Offset Basketweave



THR14/M4x8SOV Matte
Loom Twill Mix Semi-Oval

Floor View



See Technical Page for information about Bullnose, Cove Base, and Cove Base Corner



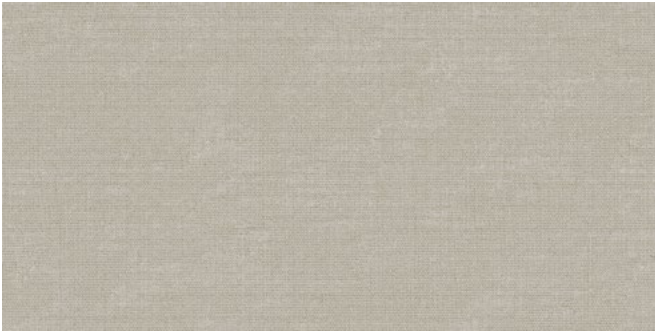
Sand

Warm and sun-bleached, Sand draws inspiration from undyed cotton and time-softened linen.

Sand Matte 12x24 | Sand Offset Basketweave Mosaic Matte M1.5x30BW | Ashford Matte 24x48

Threadscape Sand

Close-up



THR20 Matte

Field Tile Formats



3.75x12



12x24

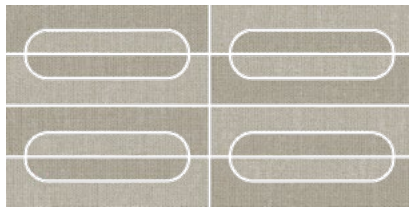


24x48

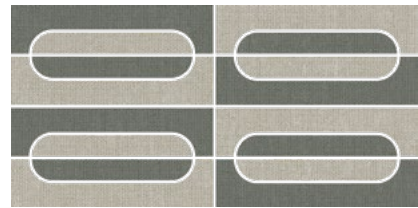
Mosaics



THR20/M1.5x3OBW Matte
Sand Offset Basketweave

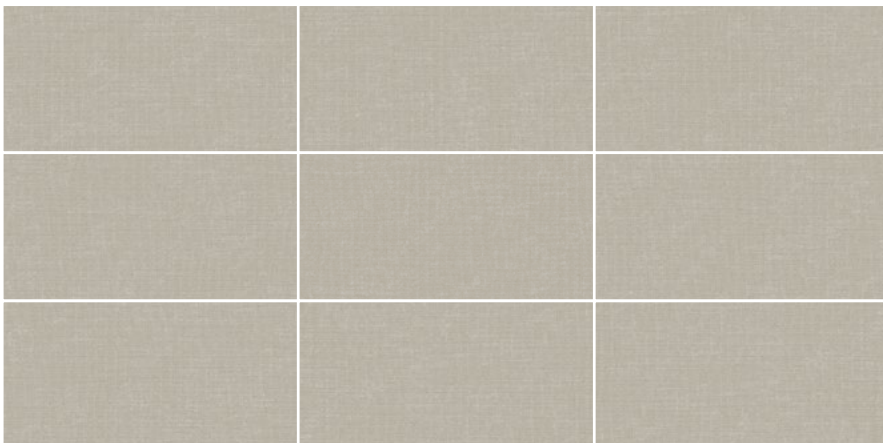


THR23/M4x8SOV Matte
Sand Drift Mix Semi-Oval



THR52/M4x8SOV Matte
Moss Sand Mix Semi-Oval

Floor View



See Technical Page for information about Bullnose, Cove Base, and Cove Base Corner



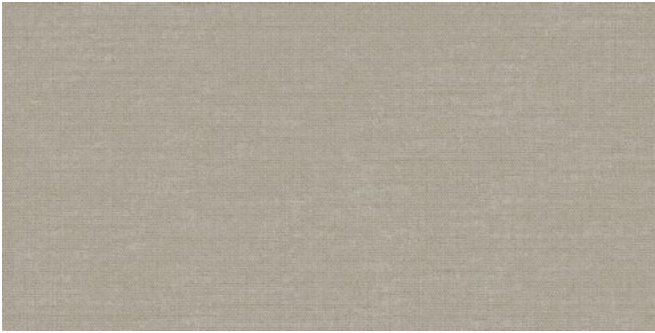
Drift

A cool, weathered mid-tone that moves between gray and warm taupe, Drift carries the depth, texture, and durability of a well-worn canvas.

Drift Matte 12x24 | Ashford Matte 24x48

Threadscape Drift

Close-up



THR30 Matte

Field Tile Formats



3.75x12



12x24

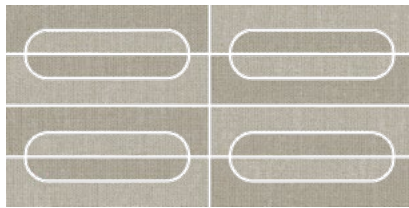


24x48

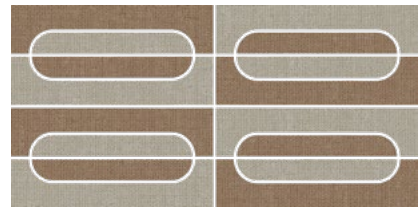
Mosaics



THR30/M1.5x30BW Matte
Drift Offset Basketweave

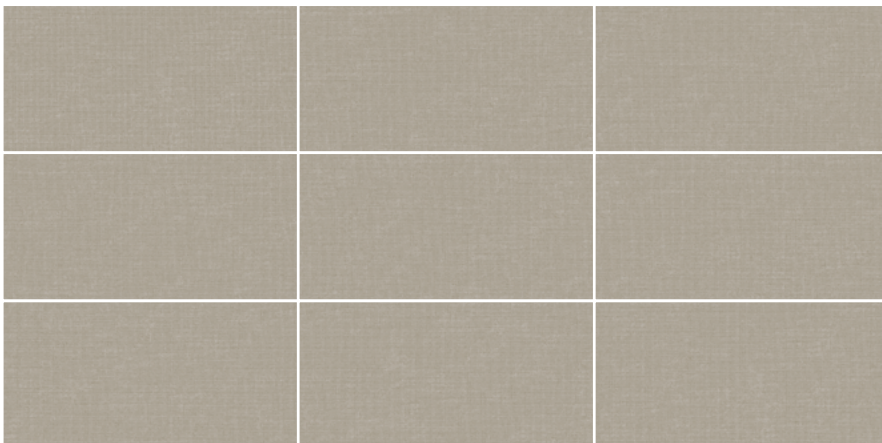


THR23/M4x8SOV Matte
Sand Drift Mix Semi-Oval



THR73/M4x8SOV Matte
Drift Suede Mix Semi-Oval

Floor View



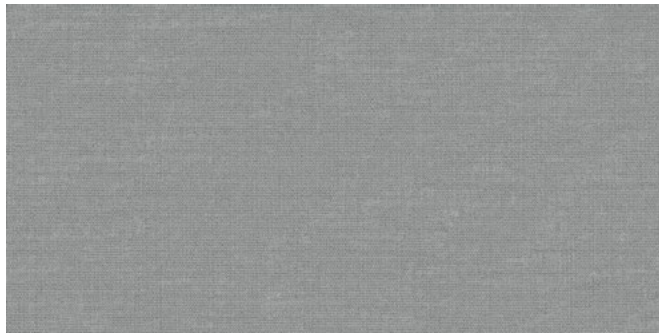


Twill

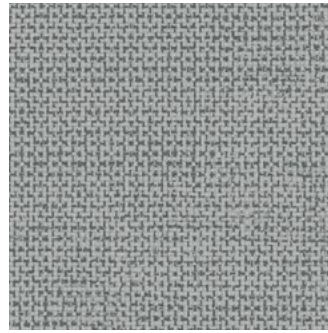
Structured and composed, Twill channels the familiarity of tailored wool in a cool, silvery gray.

Twill Matte 24x48

Threadscape Twill



Close-up



THR40 Matte

Field Tile Formats



3.75x12

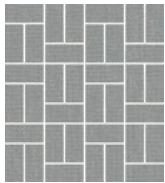


12x24

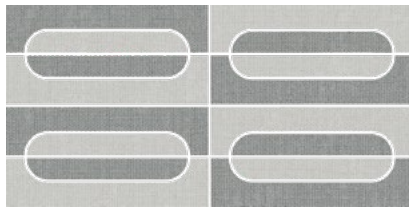


24x48

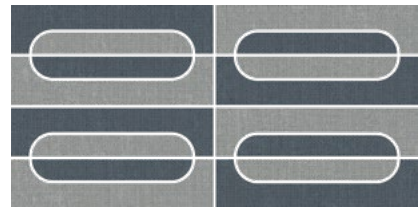
Mosaics



THR40/M1.5x3OBW Matte
Twill Offset Basketweave

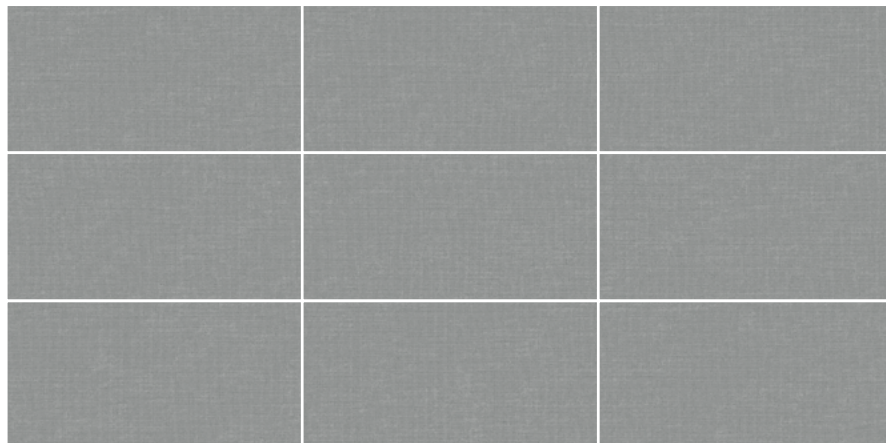


THR14/M4x8SOV Matte
Loom Twill Mix Semi-Oval



THR64/M4x8SOV Matte
Denim Twill Mix Semi-Oval

Floor View



See Technical Page for information about Bullnose, Cove Base, and Cove Base Corner





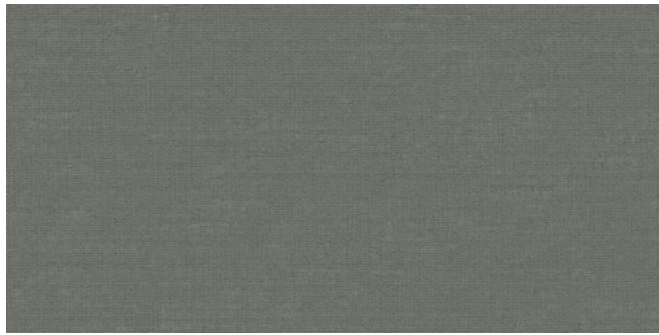


Moss

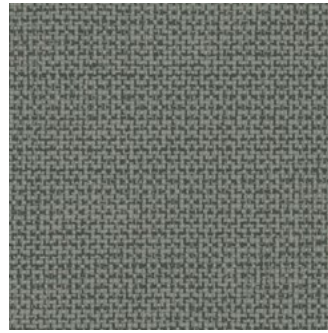
Rich, earthy, and grounded, Moss draws from the richly saturated hues of green plant-dyed textiles.

Moss Matte 3.75x12 & 12x24 | **Moss Sand Mix Semi-Oval Mosaic Matte** M4x8SOV

Threadscape Moss



Close-up



THR50 Matte

Field Tile Formats



3.75x12

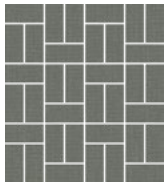


12x24

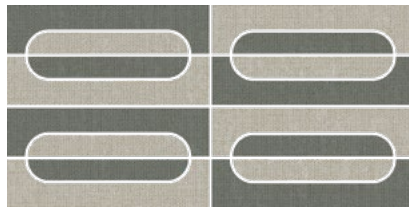


24x48

Mosaics

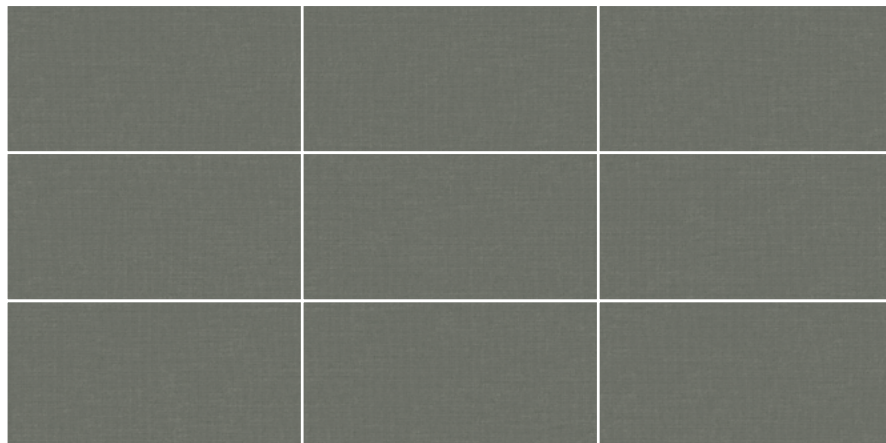


THR50/M1.5x30BW Matte
Moss Offset Basketweave



THR52/M4x8SOV Matte
Moss Sand Mix Semi-Oval

Floor View



See Technical Page for information about Bullnose, Cove Base, and Cove Base Corner



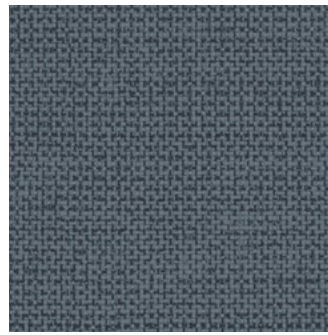
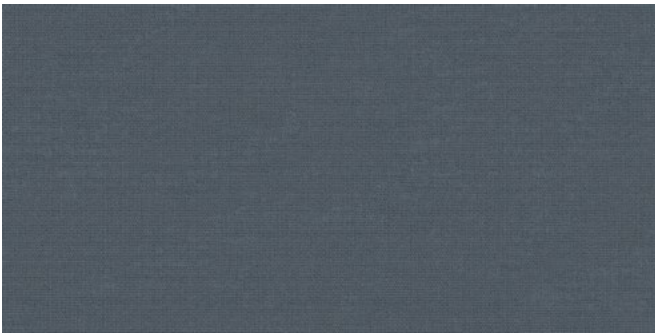
Denim

This cool, rich blue shade channels the iconic, recognizable, and ubiquitous nature of soft, time-worn indigo denim.

Denim Matte 24x48 | Loom Matte 24x48 | Crosby Matte 24x48

Threadscape Denim

Close-up



THR60 Matte

Field Tile Formats



3.75x12

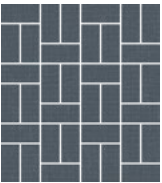


12x24

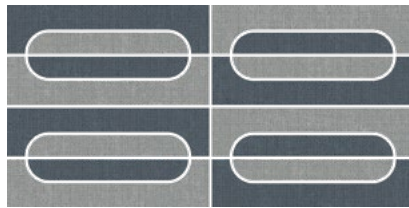


24x48

Mosaics

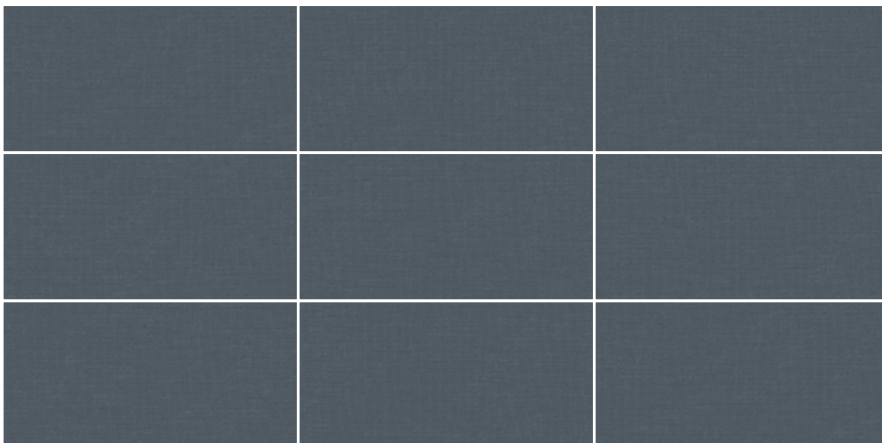


THR60/M1.5x30BW Matte
Denim Offset Basketweave



THR64/M4x8SOV Matte
Denim Twill Mix Semi-Oval

Floor View



See Technical Page for information about Bullnose, Cove Base, and Cove Base Corner



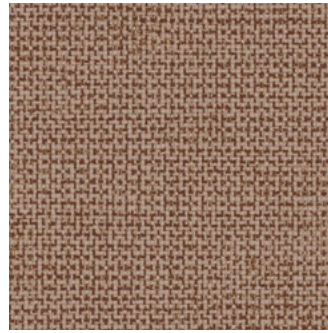
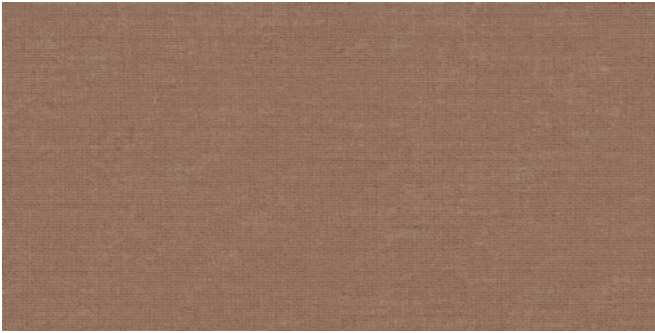
Suede

Rooted in the tradition of leather craft, Suede honors its namesake with its warm, saddle leather hue, honoring the legacy of fashion's most enduring neutral.

Suede Matte 24x48

Threadscape Suede

Close-up



THR70 Matte

Field Tile Formats



3.75x12

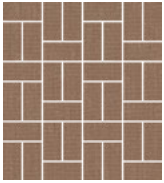


12x24

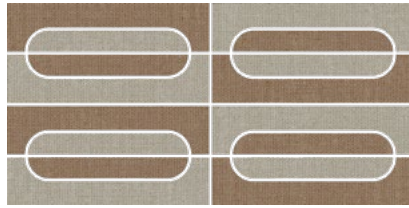


24x48

Mosaics

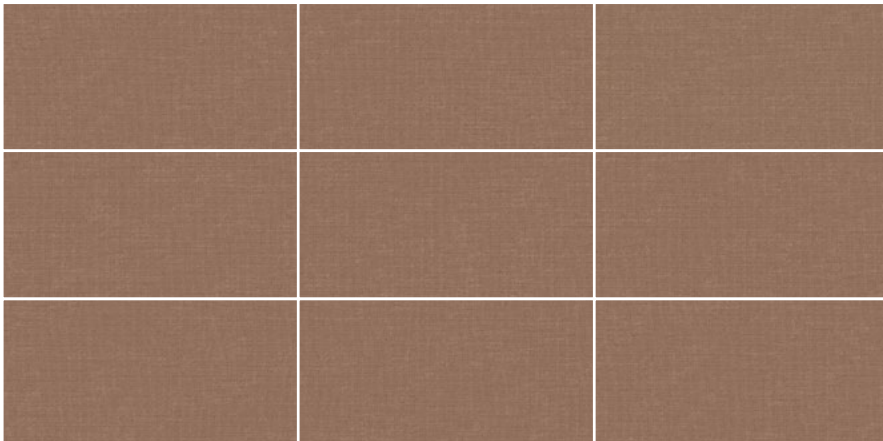


THR70/M1.5x30BW Matte
Suede Offset Basketweave



THR73/M4x8SOV Matte
Suede Drift Mix Semi-Oval

Floor View



See Technical Page for information about Bullnose, Cove Base, and Cove Base Corner

Every room, a fabric of its own

The palette draws inspiration from fabrics and natural elements that have shaped wardrobes and interiors across generations: **Loom, Sand, Drift, Twill, Moss, Denim, and Suede.**

These hues echo natural dyes, worn cottons, tailored wools, and time-worn linens. Each shade is accompanied by five coordinating plaids: **Ashford, Harrington, Westbridge, Crosby, and Bexley**, each a nod to the enduring patterns and fabrics that have crossed continents, from Scottish tartans to tailored menswear, symbolizing tradition, storytelling, and reinvention.

Threadscape considers the intimacy of textiles and extends that sentiment into architectural spaces. Like clothing,

interiors become an expression of who we are: shaped by memory, shaped by touch, shaped by the stories we choose to live alongside. The collection honors this connection by translating the humanity of fabric into a resilient porcelain surface crafted from sustainable materials and thoughtful design.

Threadscape invites interiors to be styled with the same intention as a curated wardrobe: layered, expressive, and attuned to the textures that shape our lives. It offers a new way to dress a space, where porcelain tile carries the soul of textile craft, and every surface becomes an opportunity to continue a refined, personal expression.



Suede Drift Mix Semi-Oval Mosaic Matte M4x8SOV | Drift Matte 12x24 | Suede Matte 12x24

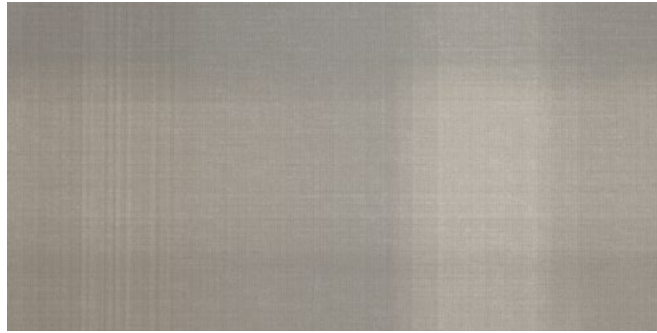


Ashford

A luminous, tone-on-tone plaid rendered in Sand, Ashford references the heritage of fine Scottish tweed with a surface that shifts subtly in changing light.

Ashford Matte 24x48

Threadscape Ashford



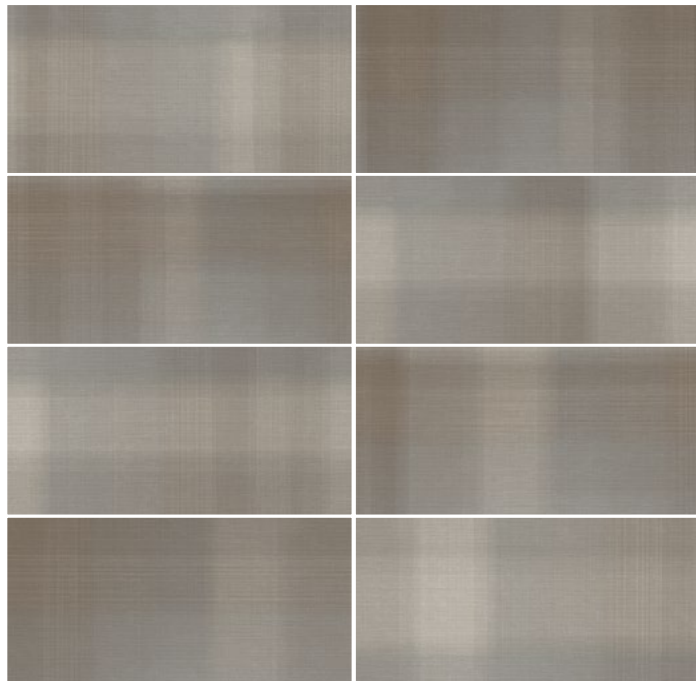
THR80D Matte

Field Tile Formats _____



24x48

Floor View



Trims not available



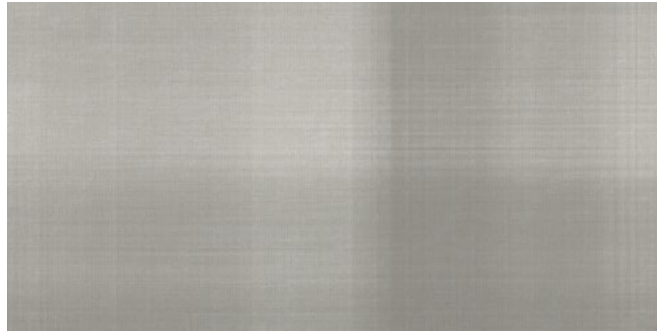
Harrington

A silvery Twill palette inspired by the structure of tailored menswear, with intersecting lines that are both architectural and textile-inspired.

Harrington Matte 24x48 | Loom Matte 12x24 & 24x48



Threadscape Harrington



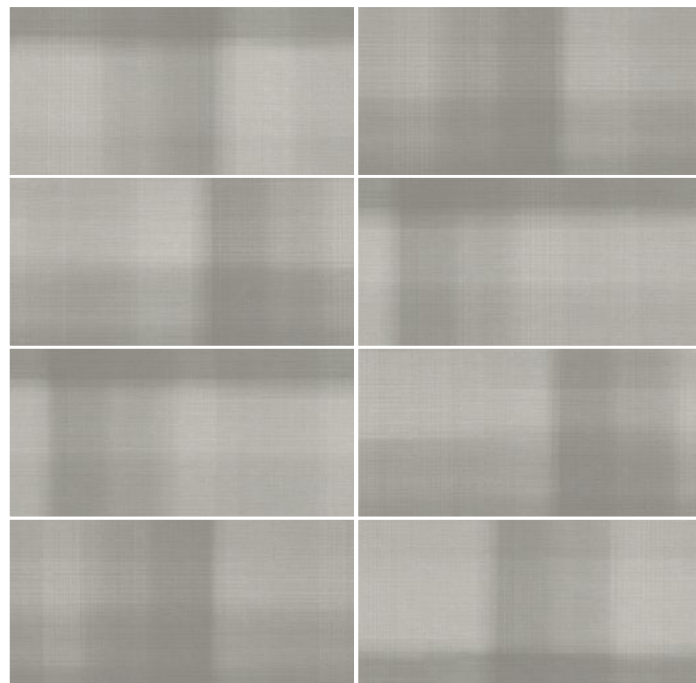
THR90D Matte

Field Tile Formats _____



24x48

Floor View



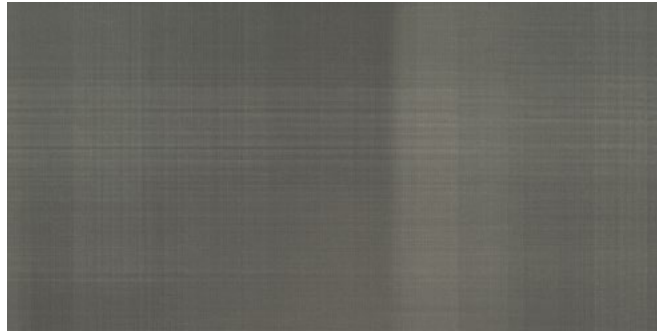
Trims not available

Westbridge

The rich depth of Moss intensifies in Westbridge's plaid composition, evoking the richly patterned wools of traditional highland cloth reinterpreted for the modern interior.

Westbridge Matte 24x48 | **Moss Matte** 3.75x12

Threadscape Westbridge



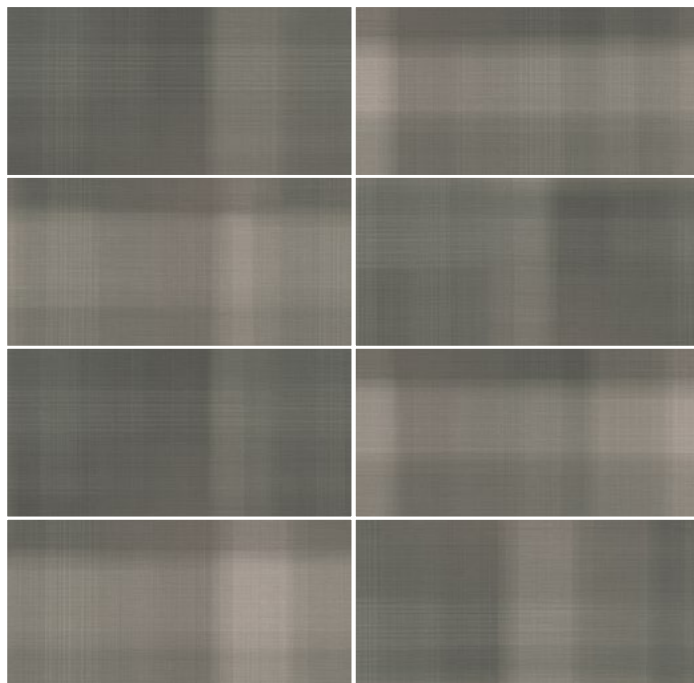
THR100D Matte

Field Tile Formats _____



24x48

Floor View



Trims not available

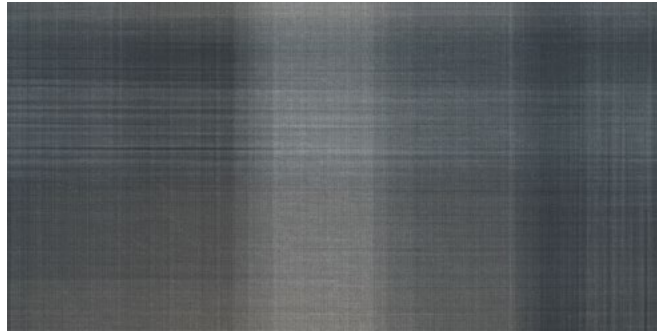


Crosby

Layered tones of Denim converge in Crosby's graphic plaid, channeling the expressive history of indigo-dyed fabric traditions from workwear to high fashion.

Crosby Matte 24x48

Threadscape Crosby



THR110D Matte

Field Tile Formats _____



24x48

Floor View



Trims not available



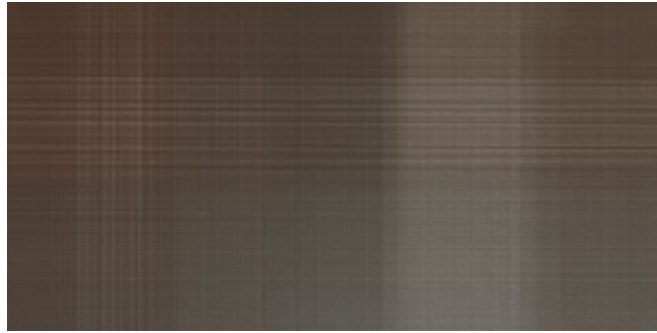
Bexley

Rooted in equestrian style interiors, Bexley's plaid weaves Suede into a pattern that feels like a warm wool blanket over a soft leather chair.

Bexley Matte 24x48 | **Loom Matte** 12x24 | **Suede Matte** 24x48



Threadscape Bexley



THR120D Matte

Field Tile Formats _____



24x48

Floor View



Trims not available

Threadscope

Porcelain Technical Data Properties (Floor)	Results ¹
ANSI® A326.3²	Matte Interior, Wet Plus (IW+)
Surface Hardness	7 Mohs
Break Strength	≥ 400 lbf. avg.
Water Absorption	≤ 0.5% ³
Intended Use⁴	Residential, Light Commercial & Heavy Commercial

¹ Values are offered in good faith as being accurate and typical of normal production. Due to the natural variation of raw materials and manufacturing processes, the values of the purchased product for any particular installation may vary.




² For more information, visit floridatile.com/productuseclassifications.

³ Average production value.

⁴ Please visit www.floridatile.com/intended-use for further details.

Field Tile Nominal Size (in) ¹	Metric (cm)	Pcs./Sq Ft ²	Thickness ³	Edge
3.75x12	9.5x30	3.27	9mm	Rectified
12x24	30x60	.5	9mm	Rectified
24x48	60x120	.13	9mm	Rectified

Mosaic	SKU	Nominal Sheet Size (in) ¹	Metric (cm)	Thickness ³
Offset Basketweave	M1.5x3OBW	12x13	30x33	9mm
Semi-Oval	M4x8SOV	16x8	40x20	9mm

Trim	Shape	SKU	Nominal Size (in) ¹	Metric (cm)
Bullnose⁴		P43N9	3x24	7.5x60
Cove Base^{4,5}		P36C9	6x12	15x60
Cove Base Corner^{4,5}		PB3169	6x1	15x2.5

¹ These values may vary from lot to lot.

² These values are based on actual sizes including the grout joint.

³ May not apply to textured surfaces or tiles with uneven back patterns such as mesh mounted mosaics.

⁴ Only come in THR10, THR20, THR30, THR40, THR50, THR60, THR70

⁵ Special order only.

Typical Uses

Threadscope color body porcelain floor and wall tile is appropriate for most residential and commercial wall, countertop, backsplash, and floor applications.

Notice: Not all flooring products are suitable for wet areas, specialized applications, or commercial use. Please refer to the American National Standard Specifications for Ceramic Tile (ANSI® A137.1) for ceramic, stone, and glass installation for specific usage and installation information.

This Florida Tile product will contribute to USGBC LEED® points and the ANSI® approved NAHB® Green Building Points.



Notes

Color, texture, and finish variations may occur due to the nature of the product.

Color reproductions in this printed piece may vary from actual tile colors. Final selection should be made from actual tile samples.

Country of origin and other product features and characteristics are subject to change due to manufacturing efficiencies and other factors. See retailer or product packaging to verify country of origin and other product characteristics.

Color Variation

	V2 Slight Variation 10, 20, 30, 40, 50, 60, 70
	V3 Moderate Variation 80D, 90D, 100D, 110D, 120D





Sand Matte 24x48 | Drift Matte 24x48

Follow us on social



For more information,
visit floridatile.com

floridatile

www.floridatile.com

